

# Views from the Hill

NEWSLETTER OF THE TEWKESBURY LODGE ESTATE RESIDENTS' ASSOCIATION Winter 2022



## Autumn Harvest event

### Record-Breaking Apple Pressing

This year's Autumn Lunch and Apple Pressing was a core-ker! A stunning October afternoon combined with a bumper harvest, borrowed press (thanks Maria Branchini) and enthusiastic volunteers, meant that a record-breaking number of apples were pressed. A constant



supply of pippins, russets and “not-quite-sures” were brought up in bags, buckets and baskets to be chopped, crushed and pressed. Litres of the amber-coloured, extremely flavoursome blend were bottled for taking home. Special mention goes to Nicholas Keogh who manned the press all afternoon and to the team of dedicated choppers and crushers (even if they had to admit defeat at the end of the afternoon and take the remaining apples for crumble!). The

*New York is where the big apple is, but Minneapolis is where the mini Apple is.*



### Inside this issue:

Autumn Harvest:	1
Upcoming Events:	2
AGM:	2
Street Trees:	2
Horniman News:	3
Planning:	3
Committee Changes:	4
Committee:	4

*continued on next page...*



continued from previous page...



children's craft activities, bulb planting and traditional conker games were all big hits, and the lunch of delicious homemade soups and cakes, all made with seasonal produce, by members was much appreciated. Thanks to all the volunteers and to Frankie Locke and Steve Acton at Hilltop for the use of their beautiful garden.

*Tina Hildrey*

## Upcoming Events

### *Carols by Candlelight*

This will take place from 5.30pm – 7.00pm on Sunday, 18th December. After mince pies and mulled wine, residents can join the small group leading the singing of traditional and Christmas songs in the Triangle, the enclosed green space bordering Horniman Drive and Liphook and Rocombe Crescents. Once again, the Triangle will be transformed by lanterns and strings of lights. It will be free of charge to members but, as in previous years, there will be a collection for the homeless charity, Crisis.



## 60th Annual General Meeting

There was good turnout for our diamond AGM in September – our first in-person meeting since 2019. The formal business was conducted in no time (a relief for many) and all resolutions were passed unanimously, including the re-election of officers. Afterwards, Councillor Sophie Davis gave a very informative talk about planning regulations and answered questions on a variety of issues. Stuart Checkley updated us on the local tree planting initiatives and both speakers received a well-deserved vote of thanks. We are grateful to the Horniman School for the use of their hall once again.

*Tina Hildrey*

## More trees for our streets

In the last week six new street trees have been planted on our streets and four more are expected by the end of the winter. This will bring our total count of new street trees on TLERA streets to 63!

Some of our streets have been dramatically transformed, such as Canonbie Road where Siberian Cherry trees have been planted, but there is room for more trees on all of our streets. However, trees cannot be planted within designated parking bays and in certain other locations (such as within seven metres of a street light or a road junction). Each new tree costs £550 with the Council contributing £200 of this. The remaining £350 is usually

raised by residents and, depending on our finances, TLERA can sometimes cover half of this.

*Stuart Checkley*



*If you would like a tree on your street, please contact me at [stuart@streettreesfor-living.org](mailto:stuart@streettreesfor-living.org). The deadline for expressing an interest in a new tree for next winter is 31st January 2023.*



## News from the Horniman Museum

The Horniman Museum is consulting on a new strategic review, and has posted the following statement on its web site:

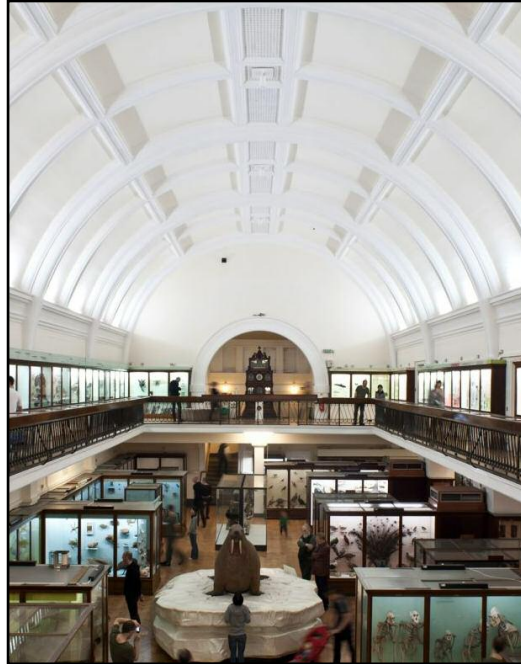
The Nature + Love project will enhance visitor experience and open up previously under-used areas by creating three exciting new attractions:

- *A Nature Explorers Adventure Zone* will be a nature-themed play area and children's café, encouraging learning and wellbeing through exploration and play
  - *A Sustainable Gardening Zone* with new plant nursery and sustainable planting displays encouraging improved health and wellbeing.
  - *A redisplayed Natural History Gallery and indoor Nature Explorers Action Zone*, exploring human understanding of the impact upon the planet, and supporting people to make changes on a local and personal level.
- These will be complemented by a range of nature-focused partnerships and activities to diversify Horniman's audiences.

I attended the first public consultation on 10th October and we were invited to send in comments. My impression was that the Museum's ideas are at a formative stage and that there is plenty of opportunity for us to express our thoughts. Some details of proposed changes to the nature trail have been released such as two new gates, a ramp to one

and also a gate onto Langton Rise that will be open when the Gardens are open. Other local organisations are being consulted and I shall be attending a meeting on behalf of Street Trees for Living.

There will be further consultation meetings and if you would be interested in attending you could write to [framework@horniman.ac.uk](mailto:framework@horniman.ac.uk) to request an invitation.



*The natural history Gallery*

## Planning

### *Our back gardens: Lewisham's new Local Plan and a new TLERA policy*



Green infrastructure is a topic featured in the latest version of Lewisham's new Local Plan published in September this year. As well as the network of parks and green and open spaces, private residential gardens are considered part of the assets that support health and wellbeing, improve air quality, conserve natural habitats and species, and in turn play a part in reducing the effects of climate change. It is also noted that the trees in private gardens, especially in our back gardens, form part of a larger canopy, or urban forest, that is important in providing the above benefits.

The Local Plan, which aims to establish a future vision for Lewisham over the next 20 years, states that proposals for development should retain our trees for their contribution to the ecosystem. This includes avoiding compromising the available space through smaller developments such as building extensions or other dwellings in private gardens. It is in this context that TLERA has been developing a policy relating to planning applications that

*continued on next page...*

---

*continued from previous page...*

have been submitted for dwellings to be built in gardens on our Estate. These are regarded as backland developments if they are located in back gardens and less visible from the road, and infill developments for those more visible from the road.

As part of its commitment to members to maintain and improve the local area, TLERA has a long history of considering and responding to planning applications or developments that have been proposed, either in the Estate, or in the wider area of Forest Hill and its surrounds. Accordingly, our new policy indicates that TLERA should oppose backland and infill developments when these might harm the area, for example by changing the distribu-

tion of space between houses and gardens, by changing its character by removing trees, or by damaging the ecological and natural environment including green corridors.

Our gardens along with the Reservoir and the Telecom sites play an important role as a wildlife corridor that links Sydenham Wood and One Tree Hill, the two largest fragments of the former Great North Wood between which we are situated. This has been enhanced by our street tree initiative in which residents and the Council have contributed to 59 new trees. In addition to environmental concerns, the outdoor space provided by our existing gardens is, of course, an important amenity which we hope to continue to enjoy.

*John Jessel*

---

## Committee Changes

I would like to welcome the following new Committee members:

Isabel O'Brien (Treasurer), John Jessel (Planning), Chris Dobb (Planning), Mickey O'Brien (Westwood Park Road Rep), and James Myers (Westwood Park Road Rep. - new but old as, after moving from the Estate, he has now returned and resumed his previous role!).

Additionally, I would like to take this opportunity to thank our outgoing Treasurer, Kate Morris, who has done sterling work in that role since the beginning of 2020. We are delighted that she will continue to be part of the team as our new Website co-ordinator.

*Valerie Ward*

### Committee List

#### Officers

Valerie Ward	Chair	8699 8432
Stuart Checkley	Co-Chair	07709 578417
Isabel O'Brien	Treasurer	07714 299022
Tina Hildrey	General Secretary	8699 6039
Carole Abrahams	Membership Secretary	8291 1312

#### Road Representatives

	Representing	
Beatrice Jackson	2-70 Canonbie Road (even numbers)	8699 7143
Paul Ewan	1-81 Canonbie Road (odd numbers)	07855 946311
Nano McCaughan	Barr Beacon, Canonbie Road	8699 8438
Mary Bayliss	83-105 and 72-120 Canonbie Road	8699 8175
Rose Agnew	1-63 and 2-36 Horniman Drive	8699 7710
Christine Martyn	65-77 and 50-70 Horniman Drive,	8699 3010
	Amroth Close, Cleeve Hill	
Tony and Maria Branchini	Liphook & Rocombe Crescents	8699 3078
Alice Hutton	Netherby Road and Sydmonds Court	8699 4931
Valerie Ward	Ringmore Rise	8699 8432
Alison Welch	Tewkesbury Avenue	07919 182135
Jim Hyett	1-15d and 2-20d Westwood Park,	8699 4322
	The Hermitage	
Mickey O'Brien	22-76 Westwood Park (even numbers)	07960 938621
Rita Zarvou	15e-87 Westwood Park (odd numbers)	8699 2429
Jacqueline & Alan Priestley	78-114 & 89-125 Westwood Park)	3605 5017
James Myers	127-163 & 116-134 Westwood Park.	07961 484480
	Langton Rise/Moonlight Walk	

This newsletter was compiled and edited by Valerie Ward, and proof read by Carole Abrahams and Tina Hildrey. Design and layout by Michael Schlingmann. Contributions from members are very welcome and can be e-mailed to us at [secretary@tewkesburylodge.org.uk](mailto:secretary@tewkesburylodge.org.uk)

---